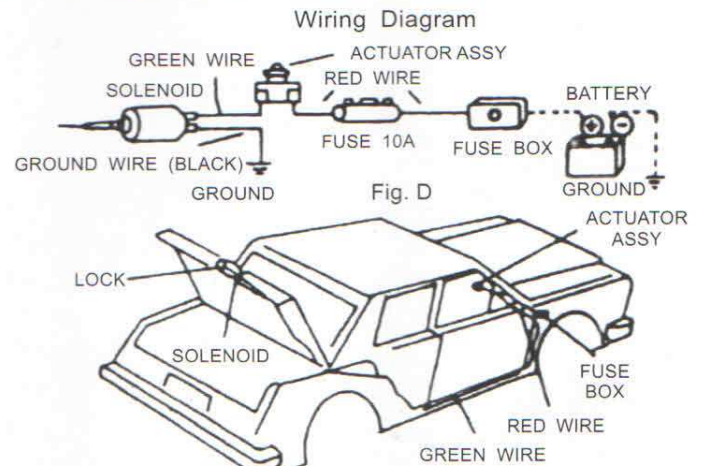
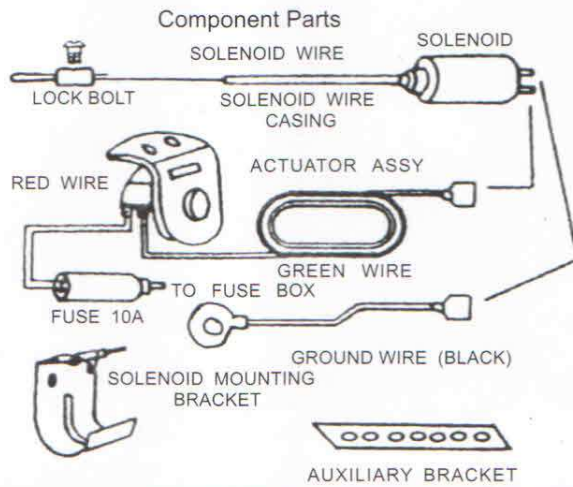
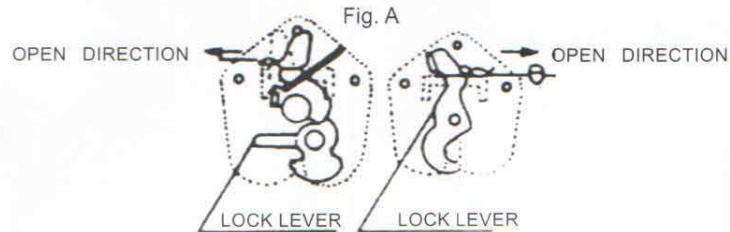


## INSTALLATION INSTRUCTION

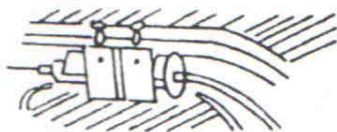
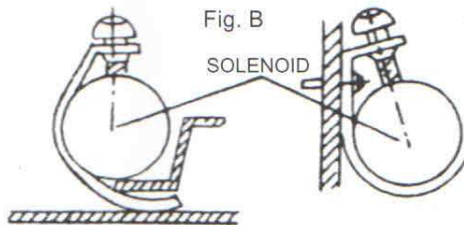


- 1** Open trunk lid and find lock. Confirm "OPEN" direction of lock lever by moving the lever.

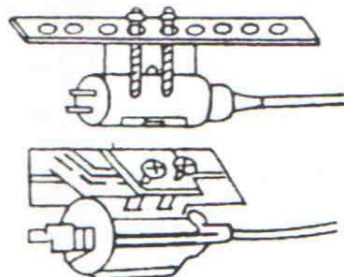
- 2** Affix hook assembly on the lock lever in "OPEN" direction as shown in FIGURE A.



- 3** Select location to mount solenoid. Mount the solenoid using solenoid mounting bracket alone (FIGURE B) or in combination with the auxiliary bracket (FIGURE C).



**Fig. C**



- 4** Connect hook assembly to solenoid wire by using lock bolt. Adjustment of length of solenoid wire is made by pulling the wire as long as possible and then returning it by  $\frac{1}{8}$  inch (2-3 mm). If solenoid wire is longer than necessary, cut it off.  
If solenoid wire is too long, the trunk release will not operate properly. If the wire is too short, the lock lever will remain at "OPEN" position and trunk lid cannot be shut. Readjust the length of solenoid wire.

- 5** The actuator assembly can be mounted on the dash board or on the center or overhead console as desired. It is suggested that the actuator assembly be mounted that the actuator assembly be mounted in the glove compartment; by locking the glove compartment, this would preclude others from access to the trunk; also, this will prevent accidental opening of the trunk while traveling at fast speeds.

- 6** Extend wiring as shown in FIGURE D. Affix ground wire (black) to one of the bolts on the trunk lock. Connect green wire between the solenoid and one of the terminals on the actuator. The red wire should be connected between the second terminal on the actuator and the fuse-box or battery.